

THE LAUNCESTON NATURALIST

Volume LI No. 6

Aug -Sept 2018

The aim of the Launceston Field Naturalists Club is to encourage the study of all aspects of natural history and to support the conservation of our natural heritage.

Patron : Prof. Nigel Forteach
President : Mr Tom Treloggen, 0408 341 397
Hon. Secretary : Mr Phillip Brumby, 0407 664 554
Hon. Treasurer : Mrs Karen Manning, 0363 442 277

Meetings 1st Tuesday of month, Feb-Dec at Scotch-Oakburn College, Penquite Rd
Newstead

Program

October 13 – 14 Field Trip - East Coast Weekend with APS Northern Group – contact Roy Skabo

October 20 Field Trip – 3 Reserves Crawl (Carr Villa, Punchbowl & Cheltenham Reserves)

October 21 Skemp Day – Macroinvertebrate monitoring

November 6 General Meeting – Guest Speaker Cayne Layton – *Underwater Forests on our Great Southern Reef*

November 18 Field Trip – Water meandering

November 24/25 Skemp Day – Spring cleaning at the John Skemp Centre

December 2 Skemp Day – Christmas get-together

December 4 General Meeting – Members night, the Year That Was and Photographic Competition (See details further down)

For further program details visit <http://www.lfnc.org.au/meetings.htm>

Puggle

September –

Karen Manning asked members what the following had in common?

Banksia serrata (saw banksia), *Caladenia caudata* (tailed spider-orchid), *Cyathea cunninghamii* (slender treefern), *Veronica ciliolata* subsp *fiordensis* (Ben Lomond cushion plant), *Sarcophilus harrisii* (Tasmanian devil) and *Astacopsis gouldi* (giant freshwater crayfish).

Helen Tait correctly stated they were threatened species. Karen went on to say that there was over 600 species of plant and animal currently threatened in Tasmania that were listed on the Schedules of the *Threatened Species Protection Act 1995*, and reminded members that Threatened Species Day was on Friday 7 September.

The Year That Was

Images are needed for *The Year That Was* presentation at our December meeting. Please forward any images you don't mind sharing from Club activities to Peter Ralph who is putting this together. They can be put on an USB and given to Peter at meetings or emailed to vk7pl@wia.org.au

Social Evening - 7 August 2018

Following the success of our social evening at the Golden Brumby Restaurant last year, members chose to return to this venue again. The sixteen members and visitor who attended, enjoyed their tasty meals. Many had the all-you-can-eat option of soup, main and dessert. As usual Suzie and her staff provided a very friendly service.

Field Trip - Saturday 11 August 2018, Lake Leake Highway area

Five members braved a predicted miserable day to look at the trees and other plants along the Lake Leake Highway as we headed to Lost Falls. After a coffee break at Campbell Town we drove along the Lake Leake road and as we climbed higher the rain and fog reduced visibility suggesting a less than pleasant day and our frequent stops usually included rain.

As we saw changes in the vegetation we stopped to investigate where it was safe to do so. In most cases there were fences and we could only observe the tall eucalypts from a distance, the understorey vegetation appeared to be mainly bracken ferns.

Prior to the Lake Leake turnoff, we came across an unfenced area on our right which had seen fire in the past. We explored the area seeing grasses, ferns, and small shrubs rising from the blackened soil.

Driving into the Lake Leake Caravan Park we enjoyed our lunch in a shelter overlooking the lake and noted that there were many Eurasian Coots on the lake. We also wondered about the many stumps dotting the lake and how these might be hazardous to boats if the lake was full. A short walk proved disappointing as we could not go onto the dam wall to cross to the far shore, which from a distance with its rock wall and the surrounding vegetation, looked interesting.

On the road again back to the highway, we stopped to confirm a plant that we had seen continually on our way in, as *Leptomeria drupacea* and also found the square stemmed *Amperea xiphoclada* nearby. From here we went to the Lost Falls and started with a walk to the lower lookout where we saw *Correa reflexa* in flower and the white droops of *Cyathodes glauca*. At the Rock Pools there were finger, necklace and soft water ferns along with many mosses and lichens on the rocks. Despite the rain the falls were a pitiful trickle reflecting the lack of rain on the east coast except when we chose to go there. From the lookout we noted the incredible range of greens in

the valley below. A bright green band of riparian vegetation ran down the centre while the slopes were a picture of various hues and Prue and I wondered whether the brighter individual trees were native cherries, especially as a single tree was close to our observation point.

Returning to the car park we went to the upper area for the views. We eventually entered an open flat area with poor views into the gorge. It did however feature an interesting rock lichen forming a pattern which looked to some, like aboriginal art. An unidentified eucalypt had chosen an interesting way to survive the winds. A large branch curved down and rested on the ground providing excellent support. Moving further east to another open area we found that we had unobstructed views to the east coast, including The Hazards, the Freycinet Peninsula, Coles Bay and with a little effort we could also see Schouten Island.

On our return to Launceston we stopped at Campbell Town for a hot drink and a chat about our day, before heading off home at dusk.

Noel Manning



Cyathodes glauca
Lake Leake Highway - Lost Falls trip

Photo supplied by Karen Manning

Ferns - *Asplenium flabellifolium*, necklace fern ; *Blechnum nudum*, fishbone fern ; *Blechnum penna-marina* , alpine water fern ; *Blechnum wattsii*, hard water fern ; *Cheilanthes austrotenuifolia*, rock fern ; *Dicksonia Antarctica*, soft treefern ; *Grammitis poeppigiana*, dwarf strap fern ; *Phymatosorus pustulatus*, kangaroo fern ; *Polystichum proliferum*, mothershield fern

Lichens - *Hypopterygium didictyon*, umbrella-like moss ; *Stereocaulon ramulosum*, lichen with red-brown apothecia

Grasses - *Baumea gunnii*, slender twigsedge ; *Dianella tasmanica*, forest flaxlily ; *Gahnia grandis*, cutting grass ; *Lepidosperma* sp., swordedge x2 ; *Lomandra longifolia*, sagg ; *Poa gunnii*, gunns snowgrass

Dicots - *Acacia dealbata*, silver wattle ; *Acacia melanoxylon*, blackwood ; *Acacia stricta*, hop wattle ; *Acacia verticillata*, prickly mosses ; *Acaena echinata*, spiny sheepsburr ; *Allocasuarina littoralis*, black she-oak ; *Allocasuarina monilifera*, necklace she-oak ; *Amperea xiphoclada*, broom spurge ; *Baeckea gunniana*, alpine heathmyrtle ; *Banksia marginata*, silver banksia ; *Bedfordia linearis*, slender blanketleaf ; *Correa reflexa*, common correa ; *Daviesia latifolia*, hop bitterpea ; *Epacris impressa*, common heath ; *Eucalyptus coccifera*, snow peppermint ; *Eucalyptus delegatensis*, gumtopped stringybark ; *Eucalyptus pauciflora*, cabbage gum ; *Eucalyptus pulchella*, white peppermint ; *Eucalyptus regnans*, giant ash ; *Eucalyptus sieberi*, ironbark ; *Euryomyrtus ramosissima*, rosy heathmyrtle ; *Exocarpos cupressiformis*, common native-cherry ; *Geranium potentilloides*, mountain cranesbill ; *Gonocarpus teucroides*, forest raspwort ; *Hakea lissosperma*, mountain needlebush ; *Hakea macrocarpa*, smallfruit needlebush ; *Leptecophylla parvifolia*, mountain pinkberry ; *Leptomeria drupacea*, erect currantbush ; *Leptospermum scoparium*, common teatree ; *Lomatia tinctoria*, guitarplant ; *Melaleuca pallida*, yellow bottlebrush ; *Melaleuca virens*, prickly bottlebrush ; *Olearia* sp., daisybush ; ? *Ozothamnus thyrsoides*, arching everlastingbush ; *Pimelea nivea*, bushmans bootlace ; *Pomaderris apetala*, common dogwood ; *Pomaderris pilifera* subsp. *pilifera*, hairy dogwood ; *Pultenaea juniperina*, prickly beauty ; *Pultenaea pedunculata*, matted bushpea ; *Tasmannia lanceolata*, mountain pepper

Birds – *Corvus tasmanicus*, forest raven ; *Fulica atra*, eurasian coot ; *Lichenostomus flavicollis*, yellow-throated honeyeater ; *Phalacrocorax* sp., cormorant ; *Phylidonyris pyrrhoptera*, crescent honeyeater ; *Platycercus caledonicus*, green rosella ; *Strepera fuliginosa*, black currawong



Lost Falls near Lake Leake

Photo supplied by Karen Manning



Blechnum wattsii, hard water fern

Photo supplied by Karen Manning

Skemps Day Tree Maintenance 18 August 2018

Nine members assisted with the tree maintenance along the creek, removing tree guards and trimming up the plants. We tended to approximately 50 plants between the showers and hail, plus collecting up and storing the removed guards. Thanks to all that assisted, a good days work.

General Meeting September 4 – Phillip Brumby – *First Aid when out in the Natural Environment*

Unfortunately this talk was not recorded for writing up. Phillip has given permission for a PDF of his presentation to accompany this newsletter.

Field Trip Sunday 16 September – North East Coast

Nine members and 2 guests met at the Visitor Centre in Bridport to look at the Waterhouse area to the east of Bridport. Member Ann and Lou, a visitor from the North East Field Nats, first took us to Hardwicke's Hill where we had an almost 360 degree view of the surrounding area. They pointed out Ben Nevis and other surrounding mountains including Arthur, Barrow, Cameron, Horror and Stronach, and talked briefly about how the aboriginals used the plains below for hunting. This was also a connecting route to other tribes and small burns were used to keep this passageway open. Noel saw a wedge-tailed eagle from the hill and while walking back to the cars the group at the front saw a large echidna.

Our next stop was Blizzards Landing where a lazy, cold wind made conditions uncomfortable and convinced us that somewhere more sheltered was needed for our lunch break. Walking around the very rocky shore we looked for sea stars and anemones, and under rocks for crabs which scampered to further shelter. While rock pools were scarce we did find a few different algae and a seagrass, and John found both a black-lipped and green-lipped abalone shells.

With the wind becoming more intense, the tide turning and noting that it was getting on for our meal break we returned to the cars with our "treasures". During this stop a wedge-tailed eagle was seen in the distance and a sea eagle was seen close up.

Travelling to Big Waterhouse Lake, Lou stopping along the road to show us the Native Hemp tree, it's distinctive foliage making it stand out amongst the drab greens of the surrounding melaleuca. This plant is near threatened in both Tasmania and Victoria and has a limited distribution in Tasmania. At the Lake we lunched and looked over the treasures collected earlier, using our reference books to identify some and using our lenses to marvel at the details to be seen.

Before returning to Bridport for coffee, we walked to a small wetland a few hundred metres from our lunch spot, where Lou said we may see an Australasian Bittern, but not today. We did hear three frogs calling, which were identified as a *Crinia signifera*, common froglet, *Limnodynastes peronii*, striped marsh frog, and *Limnodynastes dumerilii insularis*, southern banjo frog.

At the Bridport Café we met Mike Douglas who had just returned from a bike ride to Waterhouse. After ordering our drinks and something to eat, we all shared the table with Mike and had interesting discussions about people's interactions with insects and insect interactions with other insects.

We had a wonderful day, many thanks to Ann and Lou for being our guides.

Flora - *Acacia longifolia* ssp. *sophorae*, coast wattle ; *Acacia melanoxylon*, blackwood ; *Acacia terminalis*, sunshine wattle ; *Acaena* sp., buzzy ; *Allocasuarina monilifera*, necklace sheoak ;

Allocasuarina paludosa, shrub sheoak ; *Allocasuarina verticillata*, drooping sheoak ; *Alyxia buxifolia*, seabox ; *Banksia marginata*, silver banksia ; *Bursaria spinosa*, prickly box ; *Carpobrotus rossii*, native pigface ; *Clematis microphylla*, small-leaf clematis ; *Comesperma volubile*, blue lovecreeper ; *Disphyma crassifolium*, roundleaf pigface ; *Epacris impressa*, common heath pink & white varieties ; *Exocarpos cupressiformis*, common native-cherry ; *Gleichenia microphylla*, scrambling coral fern ; *Gynatrix pulchella*, native hemp tree ; *Hibbertia* sp., guineaflower ; *Lepidosperma* sp., sedge ; *Leptospermum laevigatum*, coast teatree ; *Leucopogon collinus*, white beardheath ; *Leucopogon parviflorus*, coast beardheath ; *Lomandra longifolia*, sagg ; *Melaleuca ericifolia*, coast paperbark ; *Melaleuca squarrosa*, scented paperbark ; *Monotoca glauca*, goldey wood ; *Muehlenbeckia adpressa*, climbing lignum ; *Pomaderris apetala* ssp. *maritima*, coast dogwood ; *Pultanaea daphnoides*, heartleaf bushpea ; *Xanthorrhoea australis*, southern grasstree

Mammals - *Macropus rufogriseus*, Bennett's wallaby ; *Tachyglossus aculeatus*, echidna

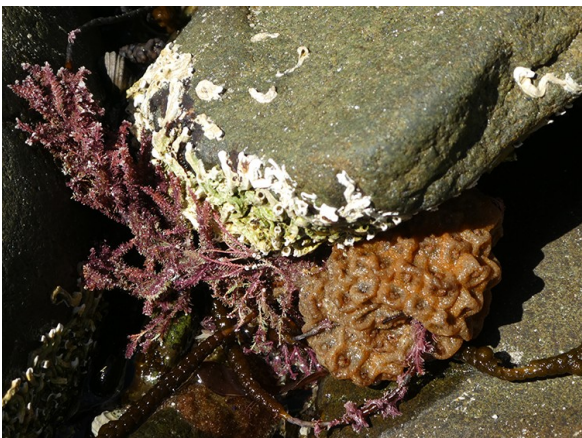
Birds - *Acanthiza pusilla*, brown thornbill ; *Aquila audux*, wedge-tailed eagle ; *Haematopus fuliginosus*, sooty oystercatcher ; *Haliaeetus leucogaster*, white-bellied sea-eagle ; *Larus pacificus*, pacific gull, adult & juvenile ; *Rhipidura albiscapa*, grey fantail ; *Strepera fuliginosa*, black currawong

Frogs - *Crinia signifera*, common froglet ; *Limnodynastes peronii*, striped marsh frog, and *Limnodynastes dumerilii insularis*, southern banjo frog

Seagrasses - *Amphibolus antarctica*

Red algae - *Ballia callitriche*, *Corallina officinalis*

Brown algae - *Cystophora torulosa*, *Macrosystis augustifolia*, *Hormosira banksia*, neptune's necklace; *Sargassum paradoxum* ; *Scaberia agardhii* ; *Seirococcus axillaris*



Polycheate tubes, coralline algae and sponge.
Taken at Blizzards Landing

Photo supplied by Karen Manning



Waterhouse Lake, Noel looking at native hemp sample

Photo supplied by Karen Manning

Annual General Meeting - September 22

Twenty one members, including our Patron Professor Nigel Forteath, were present for today's AGM held at the Club's property at Myrtle Bank, possibly the first AGM held in the Centre.

Tom Treloggen started the meeting by presenting his report for 2017/2018 which was followed by the election of office bearers for the 2018/2019 financial year.

Tom Treloggen was re-elected as President, Phillip Brumby as Vice President/Secretary, Karen Manning as Treasurer and Noel Manning and Peter Warren as Committee Members.

Members approved the motion, that all memberships remain the same as the previous financial year, Junior \$5.00, Single \$30.00, Family \$50.00 and Associate Groups \$55.00.

Nigel Forteath accepted nomination as Patron and honorary memberships were approved for Grant and Gaeleen Hanson and Nigel and Mandy Forteath. Jeff Battersby advised he was willing to remain as Auditor and this was accepted by members.

The meeting was followed by a wonderful presentation by Nigel Forteath entitled *Six Tassie Birds and Some Relatives*. He showed images taken of birds during his travels locally and on mainland Australia, giving us interesting notes on each and also anecdotal information from his intrepid bird watching. We heard about cormorants, herons, lapwings, flycatchers, honey eaters and finches with impressive photographs. Unlike us he has seen the elusive bittern, although sadly, he had his camera on the wrong setting and failed to get a photograph. A big thankyou to Nigel for giving up his time today and we did have a chuckle over the lengths that bird watchers go to, first to find and observe the bird and then to get a picture to prove it.

Meeting finished, we adjourned for an enjoyable lunch of salads, quiche and cold meats provided by the outgoing committee members, which was followed by sweets from other members attending. We all agreed that having the AGM and a lunch had been very successful and that future meetings should be held at the Club's facilities.

With the sun shining, walks were on the agenda and people headed off either into the forest or along the creek, before returning for a last cuppa and chat before heading home.

Karen spoke with Life Member Marion Simmons who does not recall in the past, the Club holding their AGM at the Centre and she thought it was an excellent idea.

Membership Renewal

With the new financial year for the Club commencing on 1 October 2018, renewal of all memberships are due (except for the recent new members). As per the AGM information, the cost will remain the same as the previous financial year, Junior \$5.00, Single \$30.00 Family \$50.00 and Associate Groups \$55.00.

Renewals can be paid by either:

- **Electronic Funds Transfer** to the Club's account at the Bank of Us, BSB: 632001 ACCT No: 100021969, please identify the payment with your surname.
- **Cheque** made payable to the Launceston Field Naturalists Club and mailed to PO Box 1072, Launceston 7250
- Or by **Cash**, handed to the Treasurer at general meetings, field trips or at the club's property.

Please DO NOT POST CASH, as no responsibility will be accepted if your envelope does not arrive.

Photograph Competition.

This year we are trying a slightly different format for the "Photo Competition".

Members can submit a photograph in any or all of these categories.

1. Animal - (Wildlife) - This can be any kind of native Tasmanian Animal, Bird, Insect, Fish etc
2. Vegetable – (Flora) – Including Tasmanian Plants, Fungi, Slime Molds, Flowers, Trees etc.
3. Mineral – (Non Living) – Rocks, Land-forms, Seascapes, Fossils, Minerals etc.

Images are to be not larger than 150mm X 210mm (6" X 8" or A5 paper size).

This is to level the playing field for entries. Prints of this size can be obtained for under a dollar at any of the printing services in Launceston.

Prints are to be mounted on card or Mat Board and must depict material from Tasmania.

Mounts can be any colour and of a size or dimensions that best display your entries.

All entries will be displayed and judged by members at the December meeting.

Additional Information

Club Outings:-

1. All outings depart from Inveresk carpark (near Museum entrance) at 9 am unless otherwise specified. Internet site updated regularly to reflect short notice changes. Saturday all-day parking cost is \$3.00. Sunday parking free.
2. Provide your own food and drinks for the outing and wear/take clothing/footwear suitable for all weather types.
3. When travelling by car in convoy, each driver is responsible to ensure that the vehicle behind is in sight immediately after passing a cross road or fork in the road.
4. When carpooling, petrol costs should be shared between all the passengers, including family of the driver, and based on other clubs the Committee suggested \$11 per 100 km.
This is a guideline only.

Name Tags - Please wear your name tags to meetings and on outings.

Tea & Coffee - A levy of 50c is currently charged for supper provided at meetings.

Field Centre All members have access to the John Skemp Field Centre, but should contact our booking manager , - Mr Phillip Brumby, 0407 664 554 or skempbookings@yahoo.com.au regarding availability and keys.

Field Centre Phone No. 03) 6399 3361

Postal Address PO Box 1072 Launceston 7250

Internetsite : <http://www.lfnc.org.au>

Emails secretary@lfnc.org.au

newsletter@lfnc.org.au

treasurer@lfnc.org.au

Find us on 

